

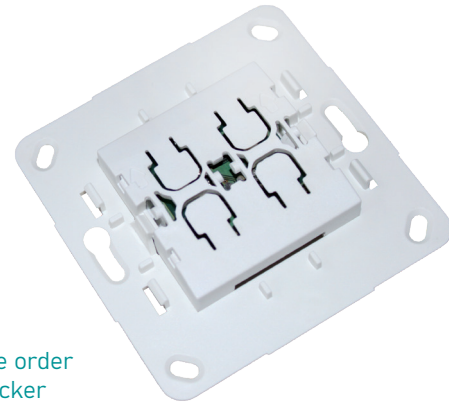
RTS32 Wall switch

Format B5 Single rocker

The RTS32 wall switch from the Format B5 range is a battery-powered wall transmitter that must be surface-mounted in dry rooms. The function of the wall switch is defined by combining it with different rockers.

The transmitter is compatible with the Busch-Jaeger switch range (see compatibility list). The transmitter module is combined with the desired rocker, simply clicked into the cover frame and is immediately operational. It can then be mounted on the wall using either adhesive pads or screws.

The RTS32 is generally used as a light switch to turn lights ON or OFF with a 2-button operation as well as to control roller shutters.



Please order the rocker separately!

RTS32E5002A11-02K

Technical specifications

Coding	Easywave
Frequency	868.30 MHz
Channels	1 or 2
Range	typically 150 m in good free-field conditions
Power supply	1x 3V-battery, CR2032
Operation	transmission lasts as long as the button is pressed (maximum 36 seconds)
Operating temperature	-20 °C to +60 °C
Dimensions (W/L/H)	Rocker: 54/54/7 mm Mounting plate: 71/71/1.8 mm
Weight	24 g (including battery)
Color	white similar RAL 9003 ivory white similar RAL 1013

Rockers



RTS32-ACC-01-xxP
1x ON/OFF



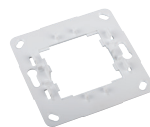
RTS32-ACC-02-xxP
1x UP/DOWN

Scope of delivery

- Transmitter module incl. battery
- Mounting plate
- Adhesive pad
- Operating manual

Accessories (optional)

RTS32-ACC-03-01P Mounting plate, white



Models

Product number	Description
RTS32E5002A11-02K	Wall switch for single rocker, Easywave, Format B5
+ RTS32-ACC-01-02P	Single rocker, 1x ON/OFF, Format B5, for RTS32, white
+ RTS32-ACC-01-07P	Single rocker, 1x ON/OFF, Format B5, for RTS32, ivory white
+ RTS32-ACC-02-02P	Single rocker, 1x UP/DOWN, Format B5, for RTS32, white
+ RTS32-ACC-02-07P	Single rocker, 1x UP/DOWN, Format B5, for RTS32, ivory white