

# RCL04 Mini receiver

## 12-24 V AC/DC 2-channel IP65



The RCL04 mini receiver is used above all to upgrade existing systems.

Its two potential free relay contacts make it possible to upgrade a wide variety of systems with a radio interface. Converting a garage door motor is just as easy as integrating Easywave transmitters in complex home call systems.

The RCL04 is powered by 12-24VAC/DC and can be programmed with up to 32 transmission codes. Technically speaking, the RCL04 is identical to the RCL03 except with regard to its housing, which is protected against dust and water..



RCL04E5002B01

### Technical specifications

Coding	Easywave Up to 32 transmitters can be programmed.
Frequency	868.30 MHz
Channels	2
Power supply	12-24 V AC/DC
Power consumption	0.4 W standby at 24 V DC 0.8 W standby at 24 V AC
Operating modes	DEAD MAN ON/OFF (2-button operation) PULSE (1 second) ROLLER BLIND MOTOR CONTROL (2-button operation) ROLLER BLIND MOTOR CONTROL (3-button operation)
Inputs	2 external button
Outputs	2 potential-free relay contacts (changeover)
Maximum contact load	
- AC	24 V / 1 A / 24 VA
- DC	30 V / 1 A / 30 W
Operating temperature	-20°C to +60°C
Dimensions (W/L/H)	72/114/36 mm
Color	white similar RAL 9003

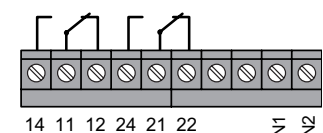
### Scope of delivery

- Mini receiver
- Dowel and screws
- Operating manual

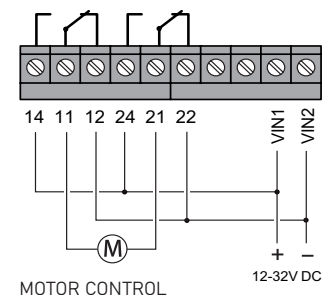
### Models

Product number	Description
RCL04E5002B01	Mini receiver, Easywave, 12-24V, 2x changeover, potential-free, IP65, white

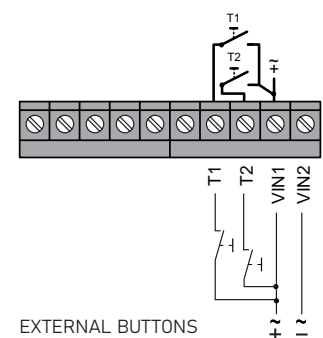
### Wiring diagram



DEAD MAN, ON/OFF,  
PULSE



MOTOR CONTROL



EXTERNAL BUTTONS