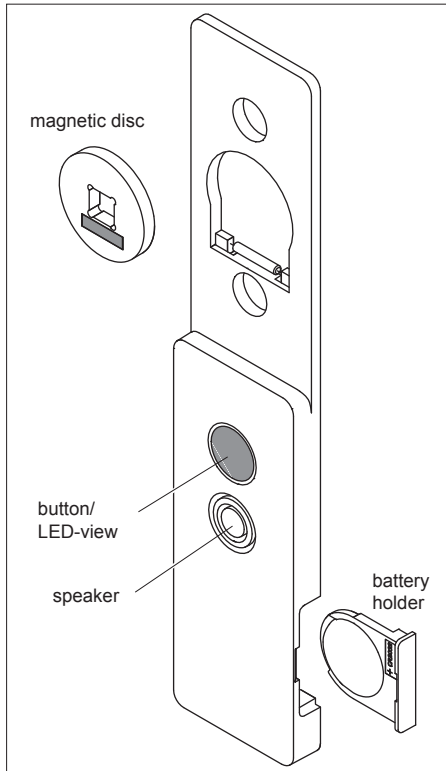


Model



RTS26-5001E-01

868.3 MHz

Technical Details

Frequency:	868.3 MHz
Modulation:	FSK
Coding:	Easywave
Power supply:	1x 3-V-battery, CR2032
Degree of protection:	IP20
Operating temperature:	-20 °C to +60 °C
Range:	free-field: approx. 150 m
Dimensions:	33x166x8 mm
Weight:	34 g (incl. battery)

Scope of Delivery

Window handle contact RTS26, magnetic disc, battery holder, battery CR2032, operating instruction

Intended Use

Only use the window handle contact RTS26 to transmit radio signals to the Radio Alarm Annunciator RTRP02.

The manufacturer shall not be liable for any damage caused by improper or non-intended use.

Safety Advice



Before using the Radio Wall Switch, carefully read through the operating instructions!

Also note the operating instructions of the receiver(s)!

Please check regularly the ready-to-transmit-state of the device!

Have faulty devices checked by the manufacturer!

Do not make any unauthorized alterations or modifications to the device-!

Keep the batteries out of the reach of children!

Function

The window handle contact RTS26 is a magnetic contact that signals the open/closed status of a window acoustically and transmits an alarm telegram wireless to the radio alarm annunciator RTRP02.

If a window is opened while the window handle contact is activated, a warning signal sounds for approx. 1.5 minutes. You can deactivate this by pressing the button for some time. Once the window is closed, the window handle contact activates itself automatically after 10 seconds.

The window handle contact is suited for standard window handles with a rod dimension of 7 mm, screw dimension of 10 mm and a hole spacing of 43 mm.

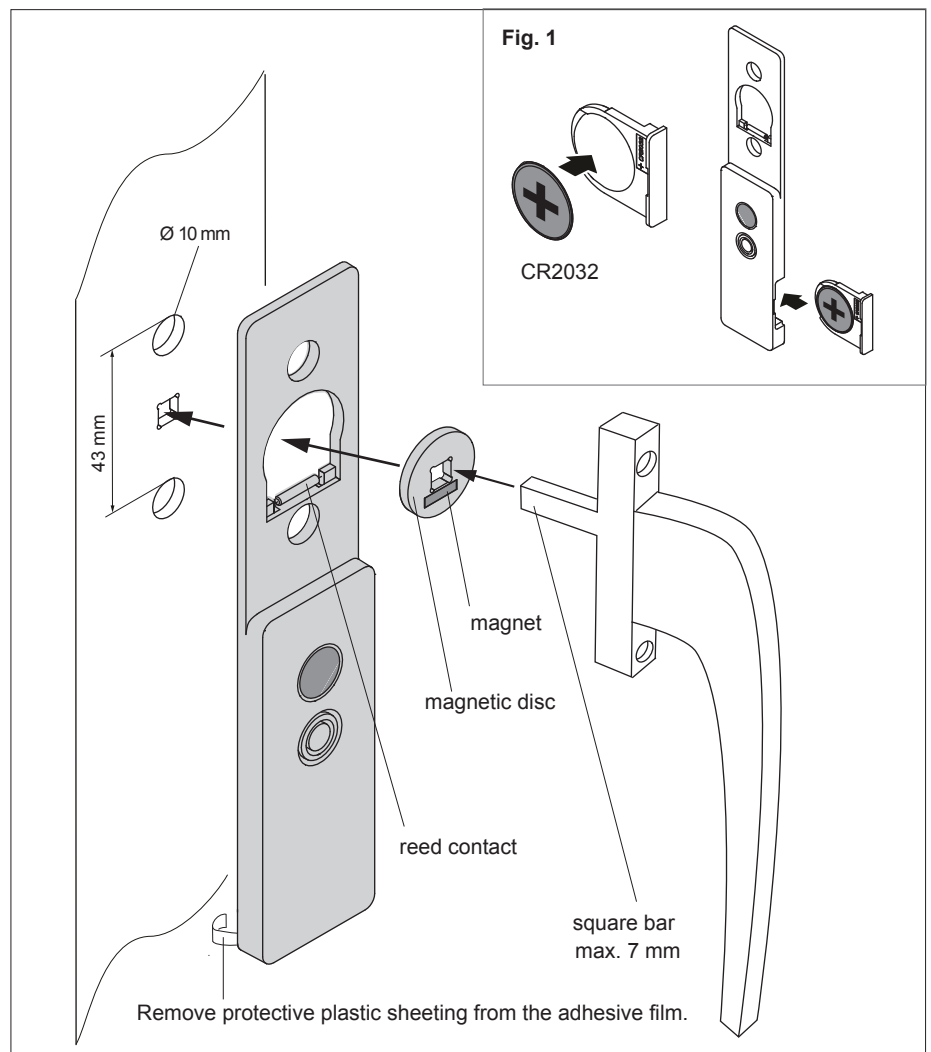
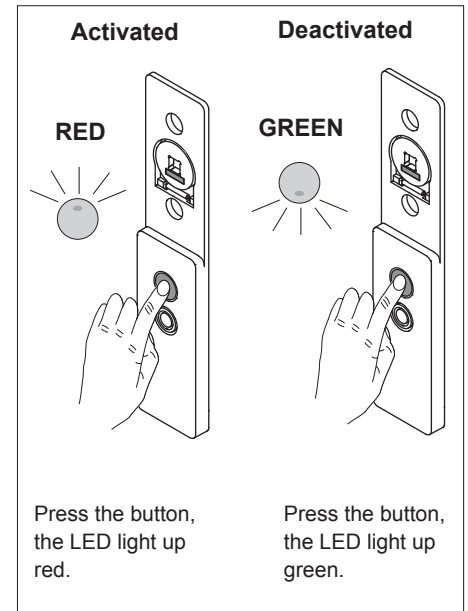
Start-Up

1. Insert the enclosed battery into the battery holder (Fig. 1). Use only batteries of type CR2032. Make sure the poling is correct. **The positive pole has to be visible!**
2. Unscrew the window handle while the window is closed. Remove the protective foil from the rear adhesive pad of the window handle contact and stick this onto the window frame. Observe the correct position (the drill holes must be vertically aligned).
3. Insert the magnetic disk with the magnet facing down into the window handle contact. The reed contact and the magnet must lie parallel to each other.

4. Slide the window handle through the magnetic disk back into the window and screw the handle on again.
5. Press the button until the LED briefly blinks red. Now the window handle contact is activated.

Window Handle Contact Activate / Deactivate

Press sequentially the button to activate or deactivate the window handle contact.

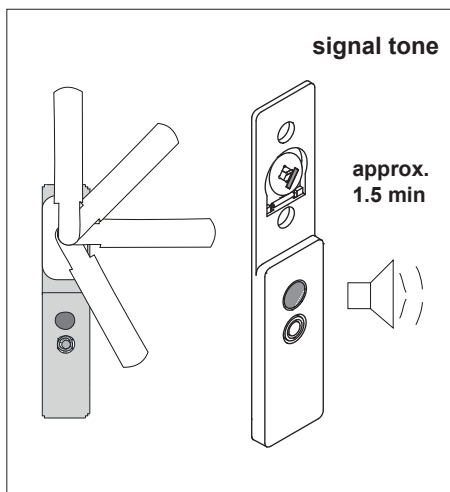


Status Indication

If the window handle is twisted while the window handle contact is activated, a warning beep sounds for approx. 1.5 minutes. After this, the window handle contact is deactivated automatically.

To shut off the warning beep, keep the button pressed until the beep has finally stopped.

Attention: Now the window handle is deactivated and can be reactivated manually immediately after closing the window or automatically after 10 seconds.



Disposal

Waste electrical products and batteries not be disposed of with household waste!

Dispose of the waste product via a collection point for electronic scrap or via your specialist dealer.

Dispose of used batteries in a recycling bin for batteries or via the specialist trade.

Put the packaging material into the recycling bins for cardboard, paper and plastics.



Warranty

Within the statutory warranty period we undertake to rectify free of charge by repair or replacement any product defects arising from material or production faults.

Any unauthorized tampering with, or modifications to, the product shall render this warranty null and void.

Conformity

This product conforms to the basic requirements of the R&TTE Directive 1999/5/EC.



For use in: EU/CH/FL/IS/N

The Declaration of Conformity can be found on the Internet at: www.eldat.de.

Service

If, despite correct handling, faults or malfunctions occur or if the product was damaged, please contact the company at the address below:

ELDAT GmbH

Im Gewerbepark 14
15711 Königs Wusterhausen
Germany

Phone: + 49 (0) 33 75 / 90 37-0

Fax: + 49 (0) 33 75 / 90 37-90

Internet: www.eldat.de

E-Mail: info@eldat.de

Battery Check

The battery voltage is monitored cyclically. Once the battery is discharged, the red LED briefly blinks red 2x at an interval of approx. 10 seconds. Please exchange the battery now.

An undervoltage telegram is also sent. This can be evaluated by the alarm signaller RTRP02.

If the voltage drops further, the window handle contact deactivates itself. An alarm will no longer be sent in this case.

Exchange the battery as described in the section "Start-up".